

# Importing and flashing pre-configured profiles.

Presented by  
Control Solutions  
(503) 410-5996  
[vfcdataloggers.com](http://vfcdataloggers.com)

# Importing and flashing pre-configured profiles.

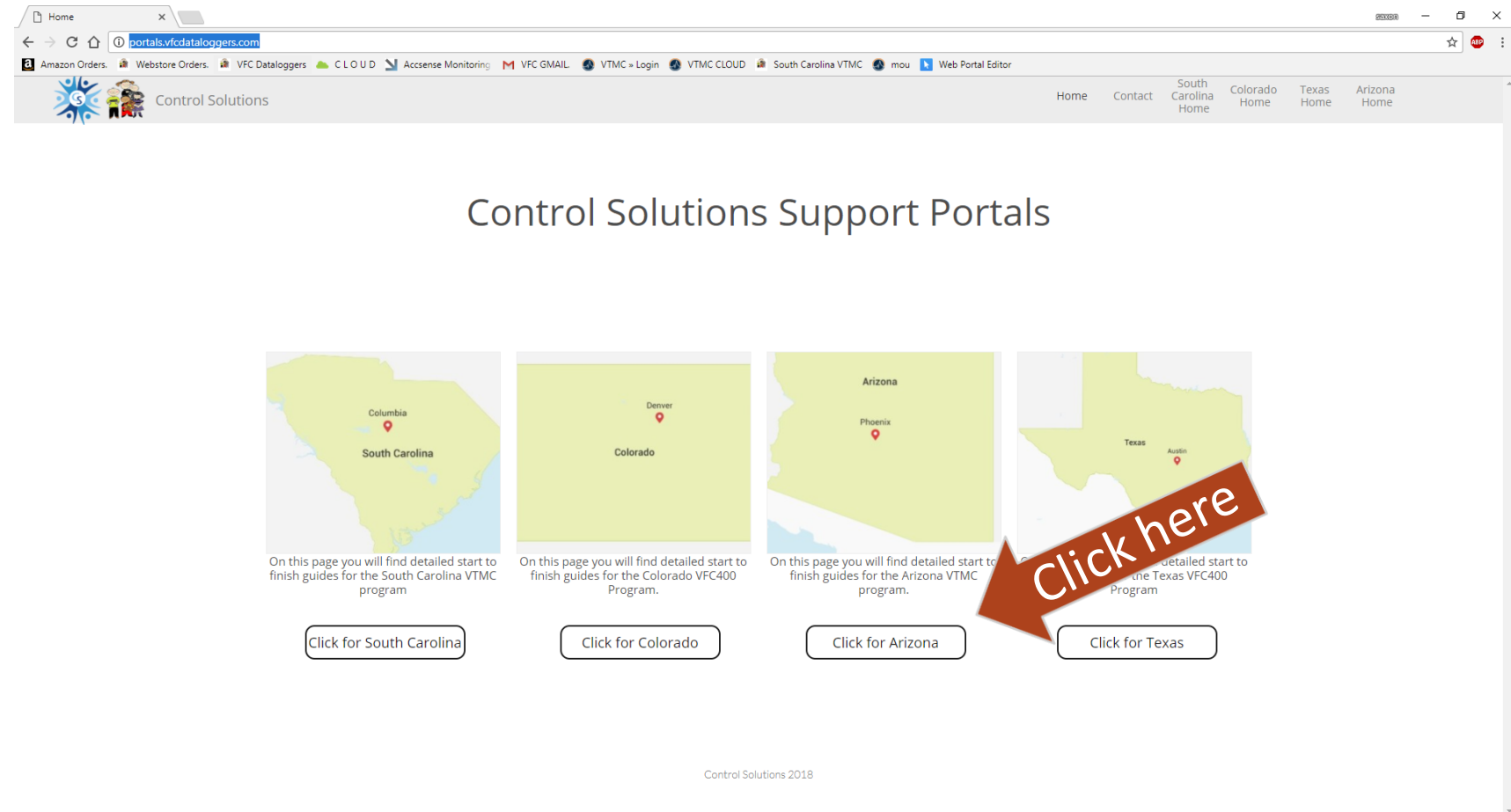
- This guide assumes you have previously installed our Control Solutions VTMC software for the VFC400. Please use the VFC400 instruction page if you need assistance installing it.
- These profiles are pre-configured! What this means for you: You will not be required to enter the configuration parameters manually.
- For your convenience all state supplied loggers will come pre-configured and ready to start out of the box. Configuration will **NOT** be required.
- Using and flashing profiles is only necessary if:
  - If you acquire or purchase a new device.
  - You've had an incident that requires the data logger to have a new profile flashed onto it.

# Importing and flashing pre-configured profiles.

Step 1. Open your internet browser. We use Google chrome but any will work.

Step 2. Navigate to [portals.vfcdataloggers.com](https://portals.vfcdataloggers.com)







Step 3. Select your state.



# Importing and flashing pre-configured profiles.

- Here we have the South Carolina support portal homepage.
- From here we are going to click on State Data Logger Profiles.

This page is custom tailored for you by us at control solutions. The information on this page will teach you how to master the VFC400 and vaccine temperature monitoring cloud.

 VFC400 Software Download Download the Option that lists VTMC	 VFC400 Instructions All information needed to install, configure and use your new digital data logger (DDL).	 VTMC Instructions Tutorials in .PDF format to help you master Vaccine Temperature Monitoring Cloud at your own pace.
 State material Here you can find profiles that utilize our software and will configure your loggers using the settings recommended by the	 Webinar Videos Here you will find recordings of the Webinar training sessions hosted by control solutions.	 Re-Calibration Process Click here for a complete breakdown of our fast and friendly re-calibration process.

# Importing and flashing pre-configured profiles.

## State Materials

- To download a pre-configured profile click the button with the respective cooling unit of your choice or both!

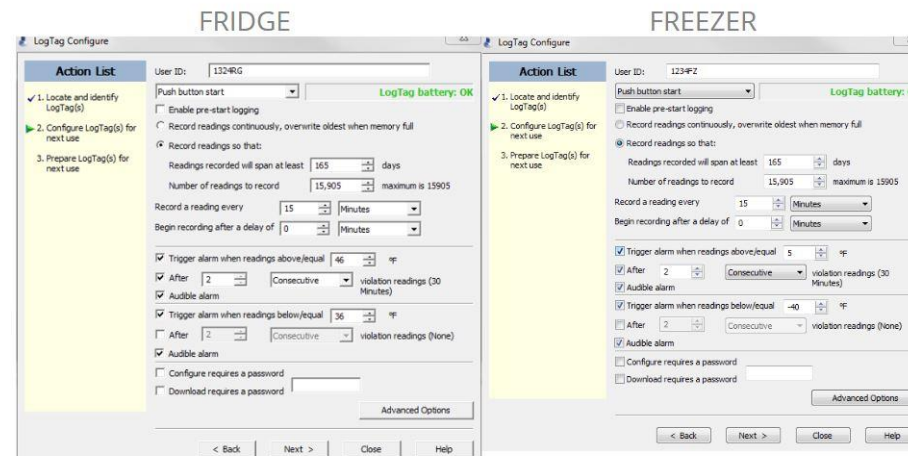
Below you can download the profiles for your VFC400 with the recommended settings from the Arizona Department of Health Services.

Please be aware your computer will not be able to open the configuration profiles unless you have our Control Solutions VTCM software installed. Software downloads can be found [here](#)



Click Download

We have also put up pictures of the configurations for quick reference



# Importing and flashing pre-configured profiles.

- Left: Google chrome. Download status is bottom left corner. Click save if prompted.

- Right: Internet explorer. Download prompt bottom center. Click save.

The image shows a side-by-side comparison of a web browser interface. On the left is Google Chrome, and on the right is Internet Explorer. Both are displaying the same webpage: 'portals.vfcdataloggers.com/sc-state-materials'. The page content includes a header 'Control Solutions', a search bar, and a main heading 'State data logger profiles.' Below this, there are instructions for downloading profiles and a list of download links: 'Instructions for importing profiles', 'Download Fridge Profile', and 'Download Freezer Profile'. A large red arrow labeled 'Click Save' points to the 'Save' button in the Internet Explorer download prompt at the bottom center. In the Google Chrome browser, the download status bar at the bottom left shows a file named 'South Carolina Frid...ltp' with a red circle around it. The Internet Explorer browser shows a download prompt at the bottom center with 'Open', 'Save', and 'Cancel' buttons, with 'Save' circled in red.

Google Chrome

Internet Explorer

State data logger profiles.

Below you can download the recommended settings from South Carolina Department of Health and Environmental Control

Please be aware your computer will not be able to open the configuration profiles unless you have Control Solutions VTMC software installed. Software downloads can be found [here](#)

Instructions for importing profiles

Download Fridge Profile

Download Freezer Profile

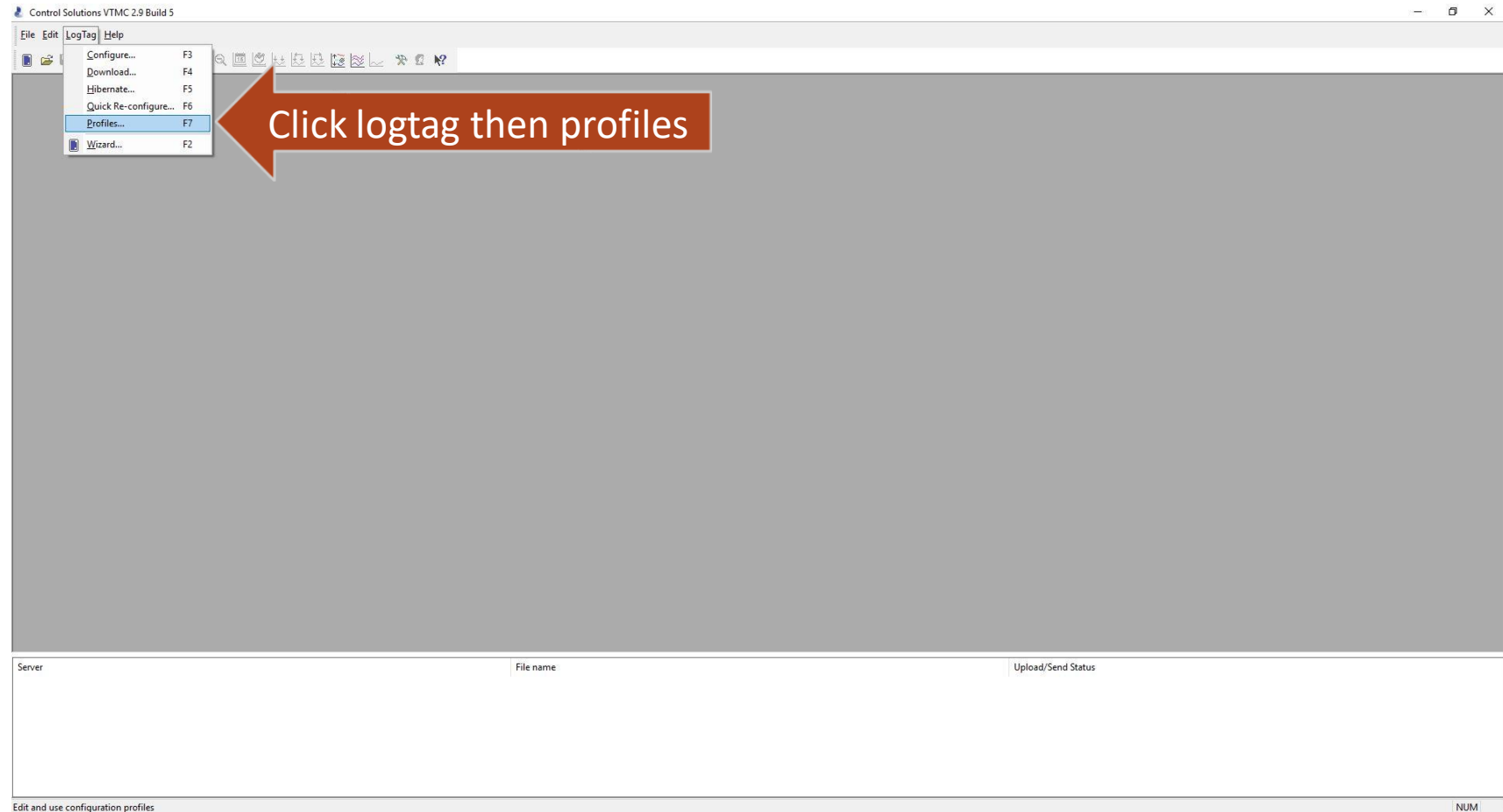
South Carolina Frid...ltp

Click Save

# Importing and flashing pre-configured profiles.

Click the “LogTag” menu button and navigate to Profiles.

Note: You can use the Function keys listed on the right of the menu as a shortcut if you would like.



# Importing and flashing pre-configured profiles.

- The configuration profile manager should have opened up.
- Now we are going to click on import so we can locate and import the configuration profile we downloaded earlier.

Control Solutions VTMC 2.9 Build 5

File Edit LogTag Help

Configuration Profiles

Double-click on a profile to configure loggers with the profile settings

Available Profiles

Name	Model	Attribute
Freezer (°C)	TRED/NFC 400	R/W
Freezer (°F)	TRED/NFC 400	R/W
Fridge (°C)	TRED/NFC 400	R/W
Fridge (°F)	TRED/NFC 400	R/W
TX Freezer (F)	TRED/NFC 400	R/W
TX Fridge (F)	TRED/NFC 400	R/W
Iowa Freezer (F)	TRED/NFC 400	R/W
Iowa Fridge (F)	TRED/NFC 400	R/W
Iowa Freezer (C)	TRED/NFC 400	R/W
Iowa Fridge (C)	TRED/NFC 400	R/W
DE Freezer (F)	TRED/NFC 400	R/W
DE Fridge (F)	TRED/NFC 400	R/W
VFC400 Final P...	TRED/NFC 400	R/W
NM Fridge (F)	TRED/NFC 400	R/W
NM Freezer (F)	TRED/NFC 400	R/W
TX Freezer (F)	TRED/NFC 400	R/W

Profile file: C:\Users\jason\Documents\My LogTag Data\Configuration Profiles\Profiles.ltp

Buttons: Configure loggers, New..., Edit..., Delete, Import..., Export selected..., Reload from file, Save changes and exit, Cancel

Server | File name | Upload/Send Status

For Help, press F1. To use a LogTag, press F2.

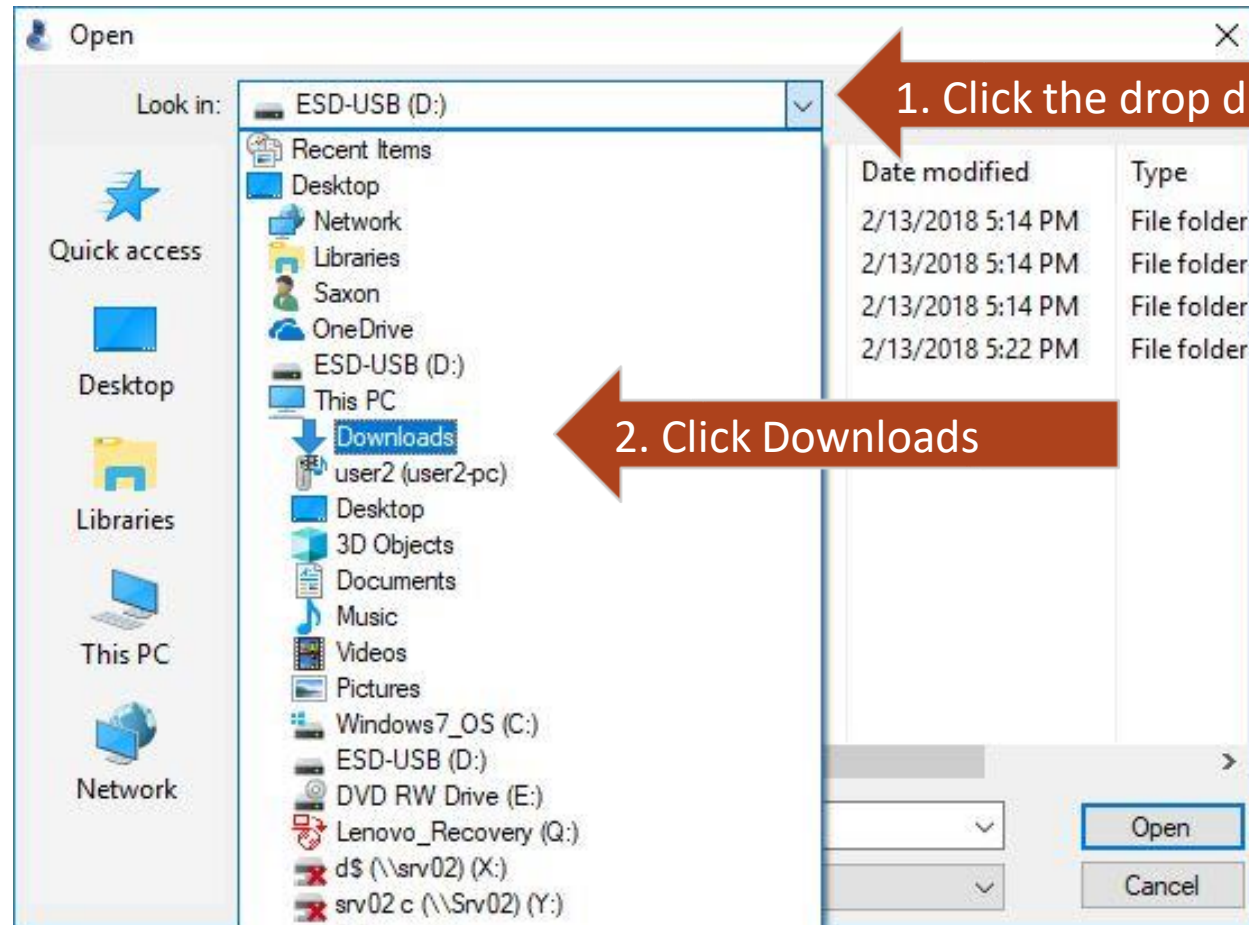
NUM



# Importing and flashing pre-configured profiles.

After clicking import, A file manger window will open.

1. Click the drop down arrow to open the menu.
2. Locate downloads.
3. Click on downloads.

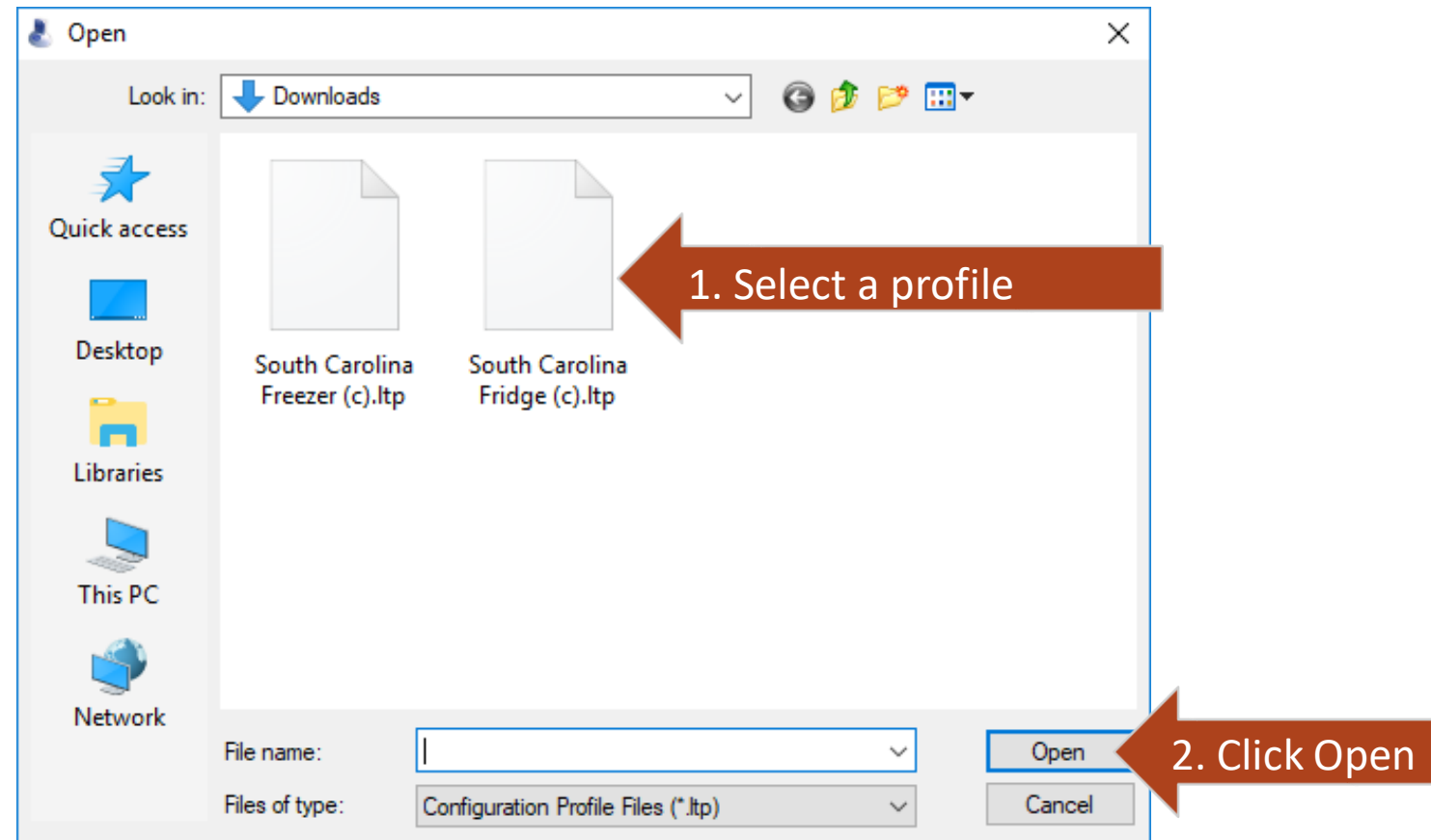


# Importing and flashing pre-configured profiles.

Now that we are in our downloads folder:

1. Locate and single click the profile you downloaded.
2. Click open.

Note: You can only import one profile at a time.

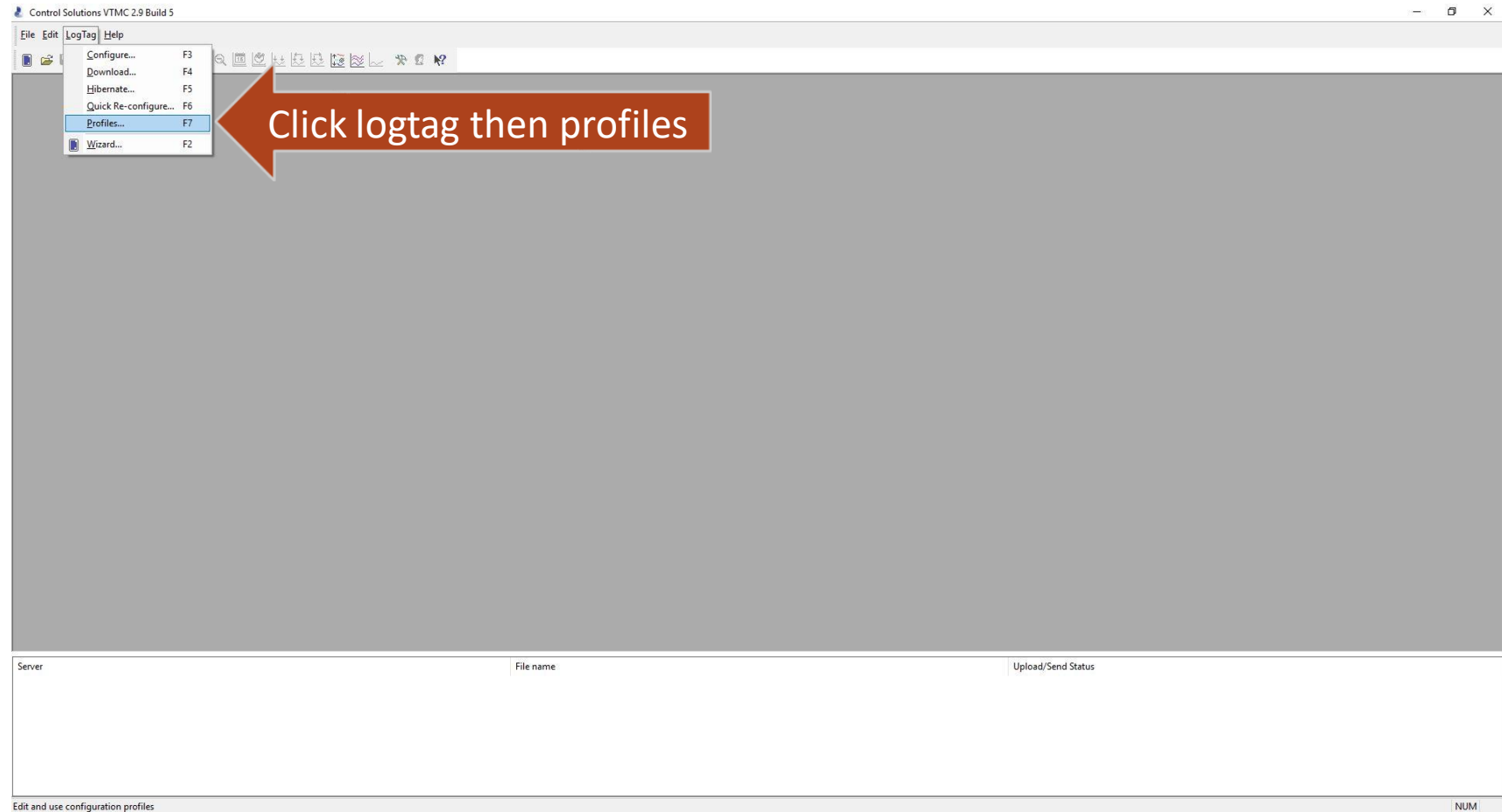




# Importing and flashing pre-configured profiles.

•After saving the new profile lets re-open our profile manager.

1. Click LogTag.
2. Click profiles.



# Importing and flashing pre-configured profiles.

- Now we will flash our new profile onto our data logger.
- First, we make sure our docking station is plugged into the PC via USB port.
- Now we insert our data logger into the Docking Station firmly.



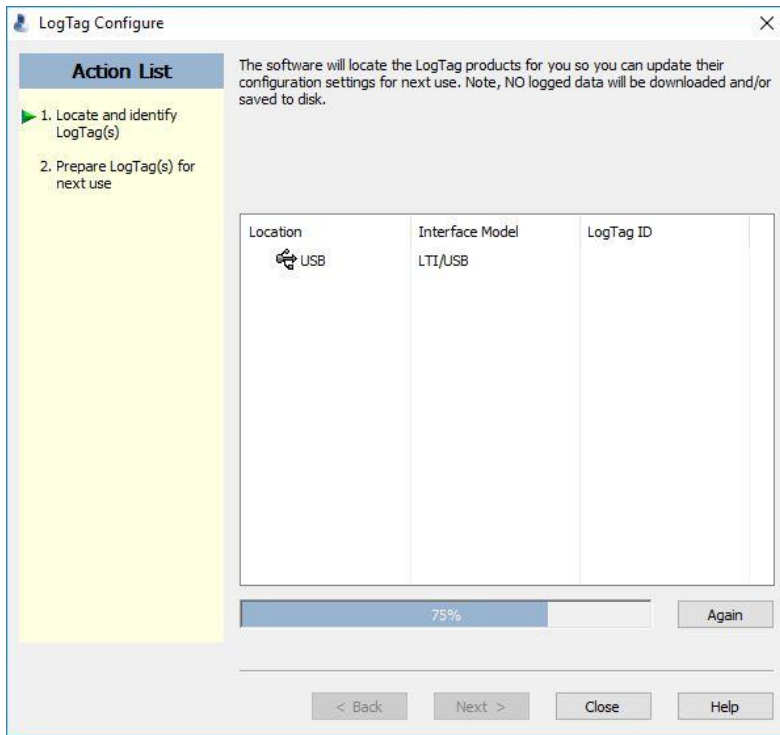


# Importing and flashing pre-configured profiles.

The configuration flashing process is made up of three steps. Do not remove the logger if you see these.

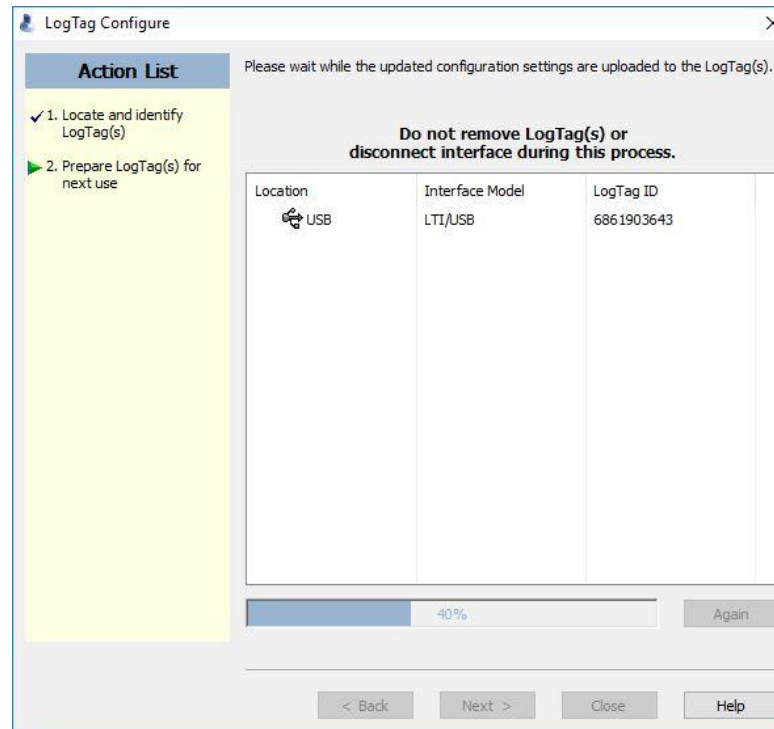
## 1. This is the detection step.

Here the software prepares the device.



## 2. This is the flash step.

The software is uploading the new settings to the device.



## 3. This is the final step.

“The logtag(s) below are now ready to start/be started” and the 100% loading bar indicates success. The device is now ready for use!

